

TENDER BULLETIN

NO. 32 OF 2024/2025 FY
REF: 10/3/6/5

01 November 2024



LIMPOPO

PROVINCIAL GOVERNMENT
REPUBLIC OF SOUTH AFRICA

This document is also available on the following website:
www.limtreaury.gov.za

Provincial Supply Chain Management Office

TABLE OF CONTENTS

	Page No.
1. REPORTING FRAUDULENT AND CORRUPT ACTIVITIES	03
2. INSTRUCTIONS.....	04
3. BID INVITATIONS	05 - 06
4. AWARDED.....	07
5. SPECIAL NOTICE	08
6. GENERAL NOTICES.....	09
ANNEXURE 1: ADDRESS LIST AND CONTACT DETAILS: PROVINCIAL DEPARTMENTS.....	10-11
ANNEXURE 2: ADDRESS LIST AND CONTACT DETAILS: PUBLIC ENTITIES	12 - 13
ANNEXURE 3: ADDRESS LIST AND CONTACT DETAILS: PROVINCIAL TREASURY SCM CLIENT SUPPORT CENTRES	14
8. SELF REGISTRATION PROCESS.....	15

REPORT

FRAUDULENT & AND CORRUPT ACTIVITIES IN THE GOVERNMENT PROCUREMENT SYSTEM

National Anti-Corruption @ 0800 701 701

Security and Investigating Services – Limpopo Provincial Treasury @ 015 298 7196

ALL COMPLAINTS/CONCERNS RELATED TO SCM NON-COMPLIANCE MUST BE REPORTED TO:

LIMPOPO PROVINCIAL TREASURY

PRIVATE BAG X 9486

POLOKWANE

0700

PROVINCIAL TREASURY, FINANCE HOUSE, 56 – 58 PAUL KRUGER STREET, POLOKWANE

2. INSTRUCTIONS

1. Bidders are advised to read the entire tender bulletin.
2. Tenders for procurement of supplies, services and disposals are categorized as follows:

SUPPLIES

- Accommodation, leasing of
- Audio visual equipment
- Building material
- Chemicals: Agricultural/Forestry/
- Laboratory/Water Care
- Clothing/Textiles
- Computer equipment
- Computer software
- Electrical equipment
- Electronic equipment
- Furniture
- General
- Medical
- Office equipment: Labour-saving devices
- Perishable provisions
- Stationary/printing
- Steel
- Timber
- Vehicle (all types)
- Workshop equipment

SERVICES

- Building
- Civil
- Electrical
- Functional (including cleaning-, and security services)
- General
- Maintenance of electrical, mechanical
- Equipment and plumbing
- Mechanical
- Professional
- Repair and maintenance of vehicles
- Transport

DISPOSALS

- Clothing and textiles
- Furniture
- General
- Scrap metal
- Vehicles

3. Bid documents are generally available in English only.
4. The address where a bid document is available from and where it must be submitted to may differ.
5. The addresses at which bid documents may be obtained and tenders must be posted appear in Annexure 1.
6. The address list of various Supply Chain Management Advice Centers at which bid documents and tender bulletins may also be obtained, appears in Annexure 3; and
7. The address list of Supply Chain Management satellite offices at which tender bulletins may also be obtained, appear in Annexure 4.

3. BID INVITATIONS

BID NO.	DESCRIPTION OF SERVICE OR SUPPLIES	CONTACT DETAILS	BID DOCUMENT PRICE (NON-REFUNDABLE)	DUE AT 11H00	BID DOCUMENTS OBTAINABLE FROM	POST OR DELIVER BIDS TO (See Annexure 1 & 2)
TC/LP 19/2024	<p>Provision of Commercial Banking Services to Limpopo Provincial Government for a period of thirty-five (35) months</p> <p>Compulsory Briefing Session Date: 13 November 2024 Venue: Department of Health: Auditorium: 18 College Street, Polokwane Time: 10:00 am</p> <p>Limpopo Provincial Treasury</p>	<p>Enquiries Mr T.H Letsoalo @ Letsoaloth@treasury.limpopo.gov.za</p> <p>Ms G.L.M Bafedile @ Bafedileglm@treasury.limpopo.gov.za</p>	Free	22/11/2024	www.etenders.gov.za www.limtreasury.gov.za	102
COGHSTA B16/2024-25FY	<p>THE APPOINTMENT FOR THE ESTABLISHMENT OF ADDITIONAL PANEL OF THREE (03) AUDIT FIRMS ON A PANEL OF FIVE (05) AUDIT FIRMS TO RENDER PROBITY AUDITING SERVICES TO THE LIMPOPO CO-OPERATIVE GOVERNANCE, HUMAN SETTLEMENTS AND TRADITIONAL AFFAIRS (CoGHSTA) IN THE PROCUREMENT OF INFRASTRUCTURE, GOODS AND SERVICES FOR A PERIOD OF 36 MONTHS.</p> <p>Non-Compulsory briefing session Date: 08th November 2024 Venue: Hensa Towers Polokwane, 20 Rabe Street Time: 10h00</p> <p>Co-Operative Governance, Human Settlement & Traditional Affairs</p>	<p>Bidding Process Mr. Mokalapa MJ @ 015 294 2278, Ms. Masenya J.T @ 015 294 2290 and Mr. Masemola S.S @ 015 294 2024</p> <p>Technical Aspects: Mr. Dolo LJ @ 015 294 2232, Ms. Dikotla MR @ 015 294 5006</p>	Free	22 November 2024	www.limpopo.coghsta.gov.za www.etenders.gov.za	106

ACDP 24/16	<p>RENDERING OF PHYSICAL SECURITY SERVICES AT TOMPI SELEKA AGRICULTURAL COLLEGE (SEKHUKHUNE DISTRICT) AND MADZIVHANDILA AGRICULTURAL COLLEGE (VHEMBE DISTRICT) FOR LIMPOPO DEPARTMENT OF AGRICULTURE & RURAL DEVELOPMENT (LDARD) FOR 36 MONTHS</p> <p>Compulsory briefing session Date: 13/11/2024 Time: 10H00 am Venue: MADZIVHANDILA AGRICULTURAL COLLEGE (VHEMBE DISTRICT)</p> <p>Department of Agriculture and Rural Development</p>	<p>Bidding Process Ms. Mtsetwene TE @ 015 294 3342 or by email at MtsetweneTE@agric.limpopo.gov.za</p> <p>Technical Aspects: Mr. Phosa MF @ 015 964 3191 or by email at Phosamf@agric.limpopo.gov.za</p>	Free	03 December 2024	www.ldard.gov.za www.etenders.gov.za	110
ACDP 24/17:	<p>RENDERING OF SECURITY SERVICES AT MARA RESEACH STATION (VHEMBE DISTRICT) AND TOOWOOMBA RESEARCH STATION (WATERBERG DISTRICT) FOR LIMPOPO DEPARTMENT OF AGRICULTURE & RURAL DEVELOPMENT (LDARD) FOR A PERIOD OF 36 MONTHS</p> <p>Compulsory briefing session Date: 13/11/2024 Time: 10H00 am Venue: MADZIVHANDILA AGRICULTURAL COLLEGE (VHEMBE DISTRICT)</p> <p>Department of Agriculture and Rural Development</p>	<p>Bidding Process Ms. Mtsetwene TE @ 015 294 3342 or by email at MtsetweneTE@agric.limpopo.gov.za</p> <p>Technical Aspects: Mr. Phosa MF @ 015 964 3191 or by email at Phosamf@agric.limpopo.gov.za</p>	Free	03 December 2024	www.ldard.gov.za www.etenders.gov.za	110

4. AWARDED BIDS

4.1 DEPARTMENT OF ECONOMIC DEVELOPMENT & TOURISM

Bid number	Awarded Bidder	Project Description	Amount	Date Awarded	Points
EDET 302/2024	Ysterberg Environmental Services	Appointment of a Service Provider to do Annual Veld Condition Assessments on State Owned-and Managed Reserves for the period of three (3) years	R2 764 437.22	03/10/2024	80

4.2 DEPARTMENT OF AGRICULTURE AND RURAL DEVELOPMENT

BID NO.	DESCRIPTION OF SERVICE	DATE OF AWARD	SERVICE PROVIDER	AWARD AMOUNT	POINTS SCORED
ACDP 24/10	Appointment of Service Provider to Supply and Delivery of Radio Frequency Identification (RFID) Ear Tags for Limpopo Department of Agriculture and Rural Development	25/10/2024	Ash Man Group (Pty) Ltd	R 2 218 350.00	96.00

5. SPECIAL NOTICE

5.1 VHEMBE TVET COLLEGE

REGISTRATION IN THE COLLEGE DATABASE (2025)

Closing Date: 29- November -2024 at 11h00

All the prospective service providers are invited to register in our College Database to render under listed services
Service providers are only allowed to register three services of their specialisation.

Application for registration should be accompanied by the following documents.

- Company registration Certificate
- CSD (Proof of Central Suppliers Database Registration with national Treasury)
- Company Profile
- Valid Original Tax Clearance Certificate
- Bank Statement or Cancelled Cheque
- Certified ID Copy
- BBB-EE Certificate
- Proof of residence of company or lease agreement of company
- CIDB (where applicable e.g. ME grading for Air Conditioning Services)

NB HEALTH AND SAFETY CERTIFICATE REQUIRED

Companies that fail to register in the database will not be allowed to participate in all our quotations Bidding Processes.

Queries to be directed to: MASHIGO T at 015 963 7060 during office hours.

Forms can be downloaded on our College Website at www.vhembecollege.edu.za

And emailed to scm.database24@vhembecollege.edu.za

7. GENERAL NOTICE

LIMPOPO (SCM CLIENT SUPPORT CENTERS) CSD CALL CENTRE LINES FOR SUPPLIERS

DISTRICT	CALL NUMBER	CENTRE	OFFICIAL RESPONSIBLE	TIME
Capricorn	015 291 8521		Ms. Rasilingwani M	07H30 TO 16H30
Mopani	015 812 0256		Mr. Molele MN	07H30 TO 16H30
Sekhukhune	013 265 1071		Mr. Sehale MS	07H30 TO 16H30
Vhembe	015 962 0014		Mrs. Manena A	07H30 TO 16H30
Waterberg	014 717 1376		Ms. Moloi R	07H30 TO 16H30

ANNEXURE 1: ADDRESS LIST AND CONTACT DETAILS: LIMPOPO PROVINCIAL DEPARTMENTS

UNIQUE REF. NO.	BID DOCUMENT REFERENCE	CONTACT DETAILS	DOCUMENTS SOLD AT:	DOCUMENTS DEPOSITED AT
100	DSDP	Tel: 015 293 6000 Fax: 015 293 6211 Website: www.limpopo.gov.za	Department of Social Development , Office No. 57 Ground Floor, 21 Biccard Street POLOKWANE	Deposited in the box located at the Department of Social Development, 21 Biccard Street Polokwane
101	LPT	Tel: 015 298 7000 Fax: 015 295 7010 Website: www.limpopo.gov.za	Provincial Treasury 46 Hans Van Rensburg Street, POLOKWANE and all Provincial Treasury Client Support Centres	Deposited in the bid box located outside a guard house at Ismini Towers, 46 Hans Van Rensburg Street, Polokwane
101A	TC/LP	Tel: 015 291 8400 Fax: 015 295 3310 Website: www.limpopo.gov.za	Provincial Treasury 56 – 58 Paul Kruger Street, POLOKWANE and all Provincial Treasury Client Support Centres	Deposited in the bid box located at the main entrance, Finance House Building, 56-58 Paul Kruger Street, Polokwane
102	PRDP	Tel: 015 287 6000 Fax: 015 295 3840 Website: www.limpopo.gov.za	Office of the Premier , 40 Hans van Rensburg Street, POLOKWANE and all SCM Client Support Centres	Deposited in the bid box located at Mowaneng Building, 40 Hans van Rensburg Street, Polokwane
103	HEDP	Tel: 015 293 6000 Fax: 015 293 6211 Website: www.limpopo.gov.za	Department of Health , Office No. D3 Ground Floor, Old Capricorn Building, 18 College Street, POLOKWANE and all Provincial Treasury Client Support Centres	Deposited in the box located at Department of Health and Social Development, 18 College Street, Polokwane
104	LPEDT	Tel: 015 290 7600/1 Fax: 015 297 4494 Website: www.limpopo.gov.za	Department of Education , Corner 113 Biccard and 24 Excelsior Streets, POLOKWANE and all Provincial Treasury Client Support Centres	Deposited in the bid box located at the main entrance of corner 113 Biccard Street and Excelsior Street, Polokwane
105	PUDP	Tel: 015 295 1000 Fax: 015 295 1163 Website: www.limpopo.gov.za	Department of Transport and Community Safety , 40 Paul Kruger Street, POLOKWANE and all Provincial Treasury Client Support Centres	Deposited in the bid box located at 1 st Floor, Paul Kruger Wing, 40 Paul Kruger Street, Polokwane
106	COGHSTA	Tel: 015 294 2000 Fax: 015 295 4190 Website: www.limpopo.gov.za	Department of Co-Operative Governance, Human Settlements & Traditional Affairs , 28 Market Street, Office No. G 74, Ground Floor, Polokwane.	Deposited in the bid box located at Hensa Towers, Cnr of Rabe and Landdros Mare Streets, Polokwane
107	DSAC	Tel: 015 284 4000 Fax: 015 284 4514 Website: www.limpopo.gov.za	Department of Sport, Arts and Culture Olympic Towers, Corner Rabe and Biccard Street, POLOKWANE and all Provincial Treasury Client Support Centres	Deposited in the bid box located at the main entrance of Olympic Towers, Corner 21 Rabe and Biccard Street, Polokwane

108	LEDET	Tel: 015 293 8300 Fax: 015 293 8319 Website: www.limpopo.gov.za	Department of Economic Development, Environment & Tourism , 90 Bok Street, POLOKWANE and all SCM Client Support Centres	Deposited in the bid box located at the main entrance of Evridiki Towers, 19 Biccard Street, Polokwane
109	LDPW & WODP	Tel: 015 284 7000 Fax: 015 284 7031 Website: www.limpopo.gov.za	Department of Public Works, Roads and Infrastructure ; Towers, 43 Church Street, POLOKWANE and all Provincial Treasury Client Support Centres	Deposited in the bid box located at Corner Blaawberg and River Street Ladanna Polokwane 0699 Private Bag X9490 Polokwane 0700
110	ACDP	Tel: 015 294 3000/30/60/90/20 Fax: 015 294 4506 Website: www.limpopo.gov.za	Department of Agriculture , Temo Towers, 69 Biccard Street, POLOKWANE and all Provincial Treasury Client Support Centres	Deposited in the bid box located at the main entrance of AgriVillage, 69 Biccard Street, Polokwane

ANNEXURE 2: ADDRESS LIST AND CONTACT DETAILS: LIMPOPO PUBLIC ENTITIES

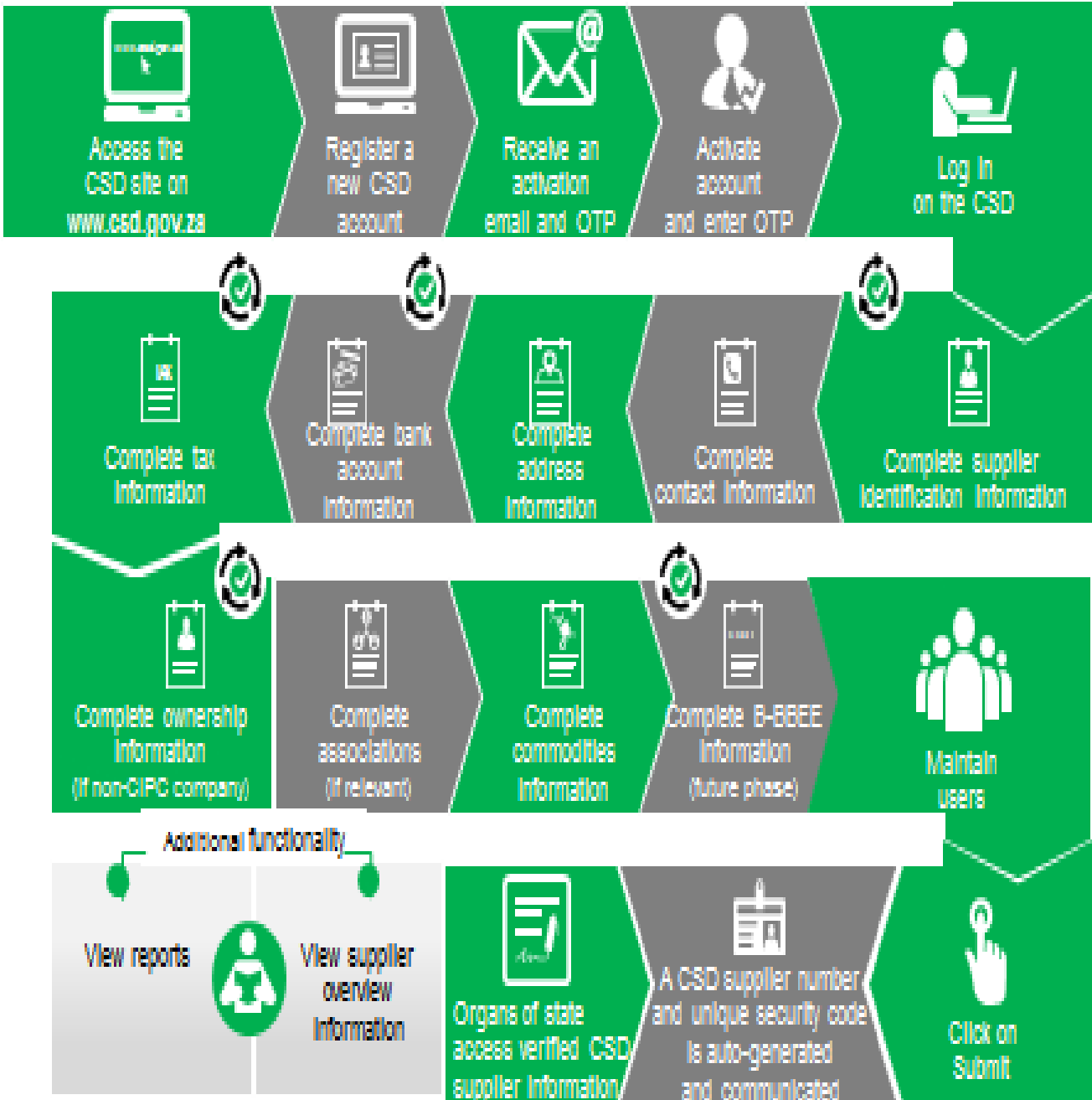
UNIQUE REF. NO.	BID DOCUMENT REFERENCE	CONTACT DETAILS	DOCUMENTS SOLD AT:	DOCUMENTS DEPOSITED AT
111	RFB: LIMP	Tel: 015 293 3621 Fax: 015 293 3660 Website: www.golimpopo.com	State Information Technology Agency (SITA) Limpopo Office, Moolman Building, 27 Market Street, POLOKWANE, 0699	The bid box is located at the Main Entrance of the Moolman Building, 27 Market Street, Polokwane
112	LTA	Tel: 015 293 3600 Fax: 015 293 3655 Website: www.golimpopo.com	Limpopo Tourism Agency , ERF 92/688, Portion 2 Southern Gateway, Ext 4, N1 Main Road, Polokwane 0699	The bid box is located in the offices ERF 92/688, Portion 2 Southern Gateway, Ext 4, N1 Main Road, Polokwane 0699
113	LGB	Tel: 015 295 5581 Fax: 015 295 3566 Website: www.lgb.org	Limpopo Gambling Board , 08 Hans van Rensburg Street, POLOKWANE, 0699	The bid box is located at the main entrance, 8 Hans van Rensburg Street, Polokwane, 0699
114	LEDA	Tel: 015 633 4700 Fax: 015 633 4854 Website: www.leda.co.za	Limpopo Economic Development Agency Enterprise Development Finance, Main Road Lebowakgomo	The bid box is located at the main entrance, Enterprise Development Finance, Main Road Lebowakgomo
115	RAL	Tel: 015 284 4600 Fax: 015 284 4701 Website: www.ral.co.za	Road Agency Limpopo (RAL) , RAL Towers, 26 Rabe Street, POLOKWANE, 0700	The bid box located in the entrance foyer (ground floor) of RAL Towers, at 26 Rabe Street, Polokwane
116	GAAL	Tel: 015 288 0122 Fax: 015 288 0346 Website: www.gaal.co.za	Gateway Airports Authority Limited , N1 Road to Louis Trichardt, Army Base, POLOKWANE International Airport, Polokwane, 0700	The bid box is located in the main entrance, the ground floor of the administration building, Polokwane International Airport, Army Base
117	VIVET	Tel: 015 963 3156 Fax: 015 963 3154 Website: www.vhembecollege.edu.za	Vhembe TVET College , Central Office, Site No 203 SIBASA 0970	Vhembe TVET College , Central Office, Site No 203 SIBASA 0970
118	WTVET	Tel: 015 491 8581/8602 Fax: 015 491 8579 Website: www.procurement@waterbergcollege.co.za	Waterberg FET College , Central Office, 36 Hooge Street Street, Mokopane, 0600	Waterberg FET College , Central Office, 36 Hooge Street Street, Mokopane, Private Bag x 2449, Mokopane 0600
119	GNT	Tel. 015 291 2641 Fax. 015 291 2648	No. 130a Marshall Street, Polokwane.0700	Great North Transport No. 130 Marshall Street, Polokwane.0700
120	MT	Tel. 015 2907715/7772	Mvula Trust 25 Rhodesdrift Street, Rhodesdrift Office Park, Bendor Ext 30, Polokwane	Mvula Trust 25 Rhodesdrift Street, Rhodesdrift Office Park, Bendor Ext 30, Polokwane
121	CCTVET	Tel.015 230 1800 Fax. 015 291 2767	Capricorn College for TVET 16 Market Street, Polokwane	Private Bag Bag X9674 Polokwane0700

122	IDT	Tel: 015 295 0000 Fax: 015 295 6559	Independent Development Trust 22 Hans van Rensburg Street, Polokwane, 0700	Independent Development Trust P.O.Box 55386 Polokwane 0700
123	DBSA	scmqueries@dbsa.org	Development Bank of Southern Africa Welcome Centre 1258 Lever Road Midrand	Development Bank of Southern Africa Welcome Centre 1258 Lever Road Midrand
124	MMSEZ	www.mmsez.co.za	Makhado Musina Special Economic Zone 93 Biccard Street, Polokwane, 0699	Makhado Musina Special Economic Zone 93 Biccard Street, Polokwane, 0699

ANNEXURE 3: ADDRESS LIST AND CONTACT DETAILS: PROVINCIAL TREASURY SCM CLIENT SUPPORT CENTRES
(CSD registration, assistance with SBD forms completion, and copies of the Provincial Tender Bulletin can be accessed from the following Limpopo Provincial Treasury District Centers):

PROVINCIAL TREASURY SUPPLY CHAIN MANAGEMENT CLIENT SUPPORT CENTRES	
<p>HEAD OFFICE</p> <p>SCM CLIENT SUPPORT 56 – 58 Paul Kruger Street POLOKWANE Private Bag x9494 POLOKWANE, 0700 Tel No. (015) 291 8400</p> <p>Contact: Ms. L. D. Msimeki @ Tel: 015 291 8755</p>	<p>Capricorn SCM Client Support Centre</p> <p>Limpopo Provincial Treasury 56-58 Paul Kruger Street Private Bag x9494 POLOKWANE, 0700 Tel No. (015) 291 8400</p> <p>Contact Person: Ms. Rasilingwani M</p>
<p>Vhembe SCM Client Support Centre</p> <p>Limpopo Provincial Treasury Government Building Complex BLOCK E GROUND FLOOR THOHOYANDOU, VENDA Tel: (015) 962 1752 Fax: (015) 962 1282</p> <p>Contact Person: Ms. A Manena</p>	<p>Mopani SCM Client Support Centre</p> <p>Limpopo Provincial Treasury Private Bag X 1973 GIYANI, 0826 Tel: (015) 812 0149 Fax: 086 219 7905</p> <p>Contact Person: Mr. M.N. Molele</p>
<p>Waterberg SCM Client Support Centre</p> <p>Limpopo Provincial Treasury 98 Nelson Mandela Street Decimale Building MODIMOLLE Tel: (014) 717 5837 Fax: (014) 717 5670</p> <p>Contact Person: Ms. R Moloi</p>	<p>Sekhukhune SCM Client Support Centre</p> <p>Limpopo Provincial Treasury Lefa Centre, Schoonoord Road JANE FURSE Tel: (013) 265 1344 Fax: (013) 265 1354</p> <p>Contact Person: Mr. M. S. Sehale</p>

Supplier Self-Registration Process



Auto verification of supplier information with SARS, GIPC etc.